

# Risk Management & Safety Update

---

LCA Board of Directors: July 10, 2023



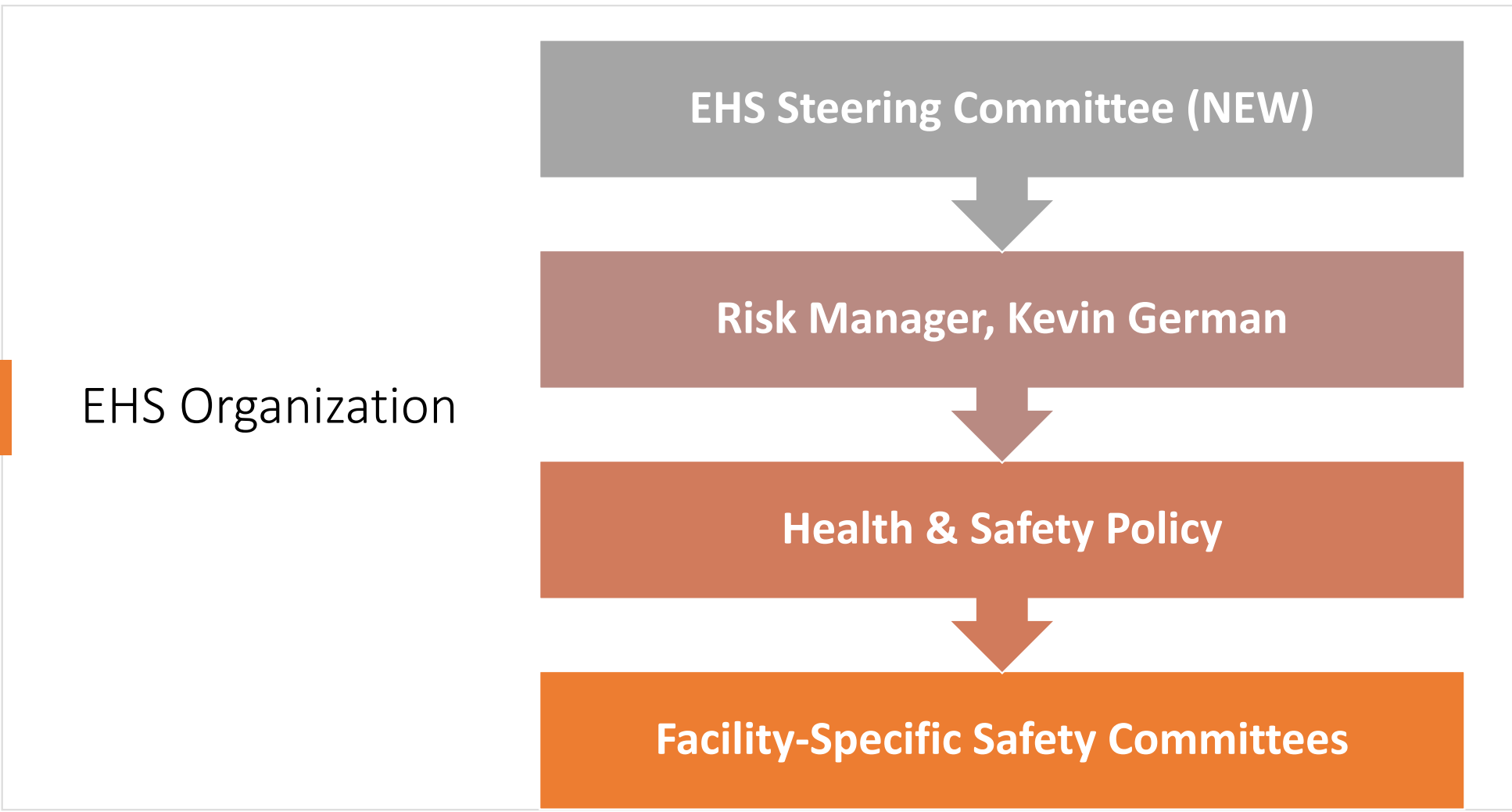
# Program Overview

## Overarching Goals

- Maintain a high safety awareness among employees
- Ensure a safe work environment
- Recognize and mitigate hazards

## 2023 Strategic Initiatives:

- Implement Employee Health & Safety (EHS) Steering Committee
- Improve incident investigation and reporting
- Improve safety metrics
- Enhance employee on-boarding program



**EHS Steering Committee (NEW)**

**Risk Manager, Kevin German**

**Health & Safety Policy**

**Facility-Specific Safety Committees**

EHS Organization

# Safety Committees (established 2013)

---

<b>Allentown Field Services</b>	<b>Water Filtration Plant</b>	<b>Kline's Island WWTP</b>	<b>Suburban Operations/ Main Office</b>
Bill Brogan (Leader) JD Reed Wambold Chris Bogert Joe Younes Mike Cawley	Chris Emig (Leader) Gretchen Schleppy Dana Andrew George Lill David Adams Steve Lettko Kevin Marx	Gary Saunders (Leader) Mark Kudera Joe Thompson Chris Momose Bryan Geissel Gretchen Schleppy Andrew Moore	Adam Lynn (Leader) Bill Schanz Dale Swoyer Jason Peters Ryan Wedge Nate Roush Scott Fedorowicz

# NEW in 2023 – EHS Steering Committee

Ed Klein, Chief Financial Office (executive sponsor)

Kevin German, Risk Manager

Andrew Moore, Director of Plant Operations

Chris Moughan, Director of Service & Technology

Annmarie Still, Human Resources Manager

Lisa Miller, Executive Administrative Support Specialist

# EHS Steering Committee – Purpose

---

- ✓ Improve overall safety performance
- ✓ Increase leadership involvement & visibility into safety program
- ✓ Promote safety awareness across the organization
- ✓ Allocate resources effectively
- ✓ Review and develop policies
- ✓ Provide direction to the Safety Committees

# Health & Safety Manual

Revised August 2014

## Current Safety Program

- Fire Safety
- Head Protection
- Eye Protection
- Handling Flammable & Combustible Liquids
- Compressed Gas Storage, Handling, and Usage
- Hand Protection
- Proper Lifting & Material Handling
- Tool & Equipment Safety
- Equipment Lockout/Tagout
- Scaffolding
- Fall Protection
- Electrical Safety
- Confined Space
- Working Alone
- Working Near Traffic

## EHS Steering Committee: *2023 Hot List*

- Revamp incident reporting forms and safety metrics
- Trenching & shoring
- Confined space entry
- Facility security
- Drug screening providers
- Training





---

## Incident Investigation & Reporting

- ✓ More thorough reporting – use of checklists
- ✓ Consistent internal notification protocols
- ✓ More robust investigations and documentation
- ✓ Root cause identification
- ✓ OSHA based recording and reporting
- ✓ Metrics for deeper review of program results
- ✓ Past incidents shape future programming & prevention



# Safety Training: Near-Term Needs

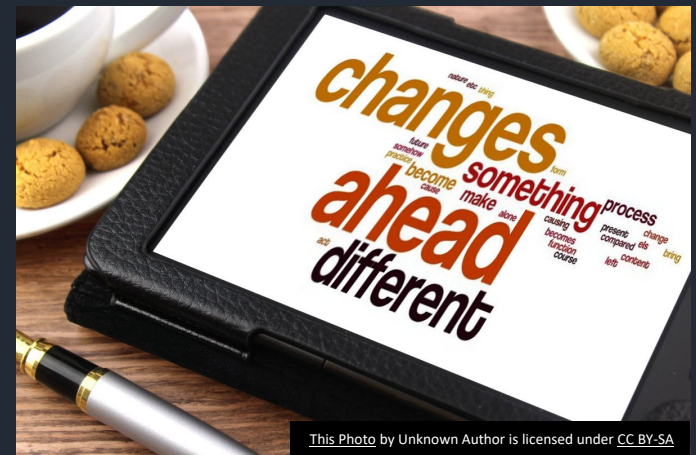
- Trenching & shoring
- Confined space entry
- Lifting
- Forklift
- CPR



This Photo by Unknown Author is licensed under CC BY-NC-ND

## EHS Steering Committee: *Future Activity*

- Policy review
- Site inspections
- On-boarding program review
- Practice drills
- First-aid teams



This Photo by Unknown Author is licensed under CC BY-SA

# Safety Metrics

	YTD		
	2023	2022	2021
Near Misses	-	2	5
Employee Injury	10	12	17
Vehicle Incidents	10	15	10
<b>TOTAL # OF INCIDENTS</b>	<b>20</b>	<b>29</b>	<b>32</b>
Employee Injury Breakdown			
First Aid	1	3	1
OSHA Recordables	9	9	16
<b>TOTAL EMPLOYEE INJURY INCIDENTS</b>	<b>10</b>	<b>12</b>	<b>17</b>
OSHA Recordable Breakdown			
LTA's	1	6	10
Non-Lost Time	8	3	6
<b>TOTAL OSHA RECORDABLES</b>	<b>9</b>	<b>9</b>	<b>16</b>
Lost-Time Days	9	70	138
Restricted Duty Days	5	39	144

# Insurance Costs

	2022		2021		2020	
	Annual Premium	% Change from Prior-yr	Annual Premium	% Change from Prior-yr	Annual Premium	% Change from Prior-yr
<b>PIRMA Pool:</b>						
General Liability	\$ 208,630	2.21%	\$ 204,109	0.28%	\$ 203,534	11.42%
Auto Liability & Comprehensive Damage	\$ 61,792	24.05%	\$ 49,811	-5.81%	\$ 52,882	7.82%
Public Officials Liability	\$ 37,970	1.90%	\$ 37,262	-5.38%	\$ 39,381	0.74%
Property						
Contract with City	\$ 38,577	26.90%	\$ 30,400	52.00%	\$ 20,000	0.00%
<b>Total PIRMA</b>	\$ 346,969	7.89%	\$ 321,582	1.83%	\$ 315,797	8.59%
<b>Other Insurance Costs:</b>						
Property - Murray Securus	\$ 304,500	13.13%	\$ 269,150	8.97%	\$ 247,000	21.08%
Worker's Compensation	\$ 179,472	-23.11%	\$ 233,410	-5.02%	\$ 245,749	12.93%
Pollution Liability (PTP & WWTP)	\$ 10,487	8.15%	\$ 9,697	0.00%	\$ 9,697	0.00%
Comp & Collision (HA Thomson)	\$ 5,167	117.19%	\$ 2,379	502.28%	\$ 395	100.00%
Liability -Norfolk Railway (HA Thomson)	\$ 250					
Employee Dishonesty Bond	\$ 4,375	-10.81%	\$ 4,905	54.98%	\$ 3,165	0.00%
Treasurer Bonds						
<b>Total Other Insurance</b>	\$ 504,251	-2.94%	\$ 519,541	2.67%	\$ 506,006	16.46%
<b>Grand Total</b>	\$ 851,220	1.20%	\$ 841,123	2.35%	\$ 821,803	13.31%
Self-insurance (City & Suburban)	\$57,688		\$7,305		\$16,402	

# Discussion

---

Risk Management & Safety Update: July 10, 2023

