

What to Expect Before, During, and After Your Water Service Line Replacement

Lehigh County Authority (LCA) is replacing lead and galvanized water service lines in your neighborhood. The steps listed below describe the process of getting your lead service line replaced and where we need your help.

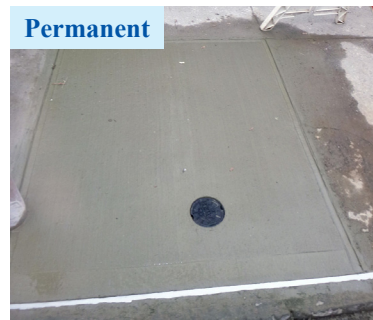
Lead and galvanized pipe should be replaced to minimize lead exposure and maintain good water quality.

BEFORE YOUR LEAD SERVICE LINE REPLACEMENT

1. Our contractor will contact you to schedule an inspection and review the plumbing connections inside your home (typically in the basement) to verify the work needed. Our contractor will work with you to schedule your service line replacement.
2. Clear the area around the water meter and pipes that will be replaced.

DURING YOUR LEAD SERVICE LINE REPLACEMENT

1. We will shut your water off during construction to replace your lead service line. The process typically takes 4-8 hours. Someone aged 18 or older must be on site.
2. To access the pipes that are underground, the contractor will need to excavate. The contractor will dig up two about 4-foot by 4-foot by 6-foot deep areas - one in the street and one at the curb stop, typically near the sidewalk or curb. This may vary based on your specific property and service line.
3. The contractor will work inside your home near where your water line enters, connecting the new copper service line to your home plumbing and water meter.
4. The contractor is responsible for final grading, seeding, and the restoration of exterior landscaping and hardscaping on the property that will be disturbed as part of the project. Replacement and/or restoration shall be done by the contractor to restore the property to its original condition, or as closely as possible, as shown in the photos below.



AFTER YOUR LEAD SERVICE LINE REPLACEMENT - Filtering, Flushing, and Sampling

Immediately After a New Service Line is Installed

- Complete the whole building flushing process.
- Clean faucet aerators/screens.
- Use a pitcher filter.

For 3 Months After Installation:

- Perform whole building flushing every other week.
- Perform 5-minute daily flushing.
- Use a pitcher filter.
- Clean aerators/screens.

For 6 Months After Installation:

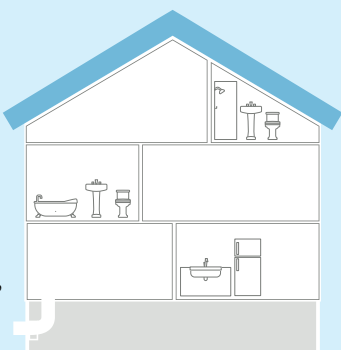
- Continue 5-minute daily flushing.
- Use a pitcher filter.
- Clean aerators/screens.

AFTER YOUR LEAD SERVICE LINE REPLACEMENT, CONTINUED

WHOLE BUILDING FLUSHING

Run water through the pipes to push out debris that might have lead.

1. Find all faucets on all floors of your building, including the basement.
2. Remove aerators/screens, when possible, from all faucets you plan to flush. Include laundry tubs, hose-bibs, bathtubs, and showers as flushing points.
3. Make sure nothing is in the way of the drains and all drains are functional.
4. Open the faucet in the **lowest floor** of the building. Run **cold water** through faucets at the highest rate possible.
5. Open faucets on the next highest floor of the building.
6. Continue until faucets are open on all floors.
7. Leave the water running through all faucets for at least 30 minutes.
8. After 30 minutes, turn off all faucets in the same order you turned them on - bottom floor to top floor.
9. Clean aerators/screens at each faucet. Install new aerators/screens if the existing ones are too old or worn. See more details to the right.
10. Perform a similar 30-minute flush every other week for 3 months.



5-MINUTE DAILY FLUSHING

Continue smaller-scale daily flushes for at least 6 months after your lead service line is replaced.

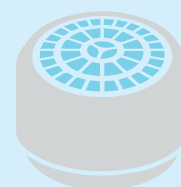
- Flush water through your plumbing for at least 3 minutes each morning (or after 6 hours of no water usage) before using for drinking or cooking, making infant formula, or brushing teeth.
- Flushing can include taking showers, washing clothes or dishes, or collecting water for gardening.



CLEANING YOUR AERATORS/SCREENS

The aerator/screen is usually at the tip of the faucet and can be screwed off to clean.

1. Remove faucet aerators/screens from all taps.
2. Rinse the faucet aerator/screens.
3. Clean the faucet aerator/screens with white vinegar. Scrub with a brush.
4. Run the water without the screen for 3 to 5 minutes.
5. Complete these steps every 6 months to reduce buildup. Replace faucet aerators/screens every year.



USING A PITCHER FILTER

- Use the NSF-53 certified pitcher filter and cartridges LCA provided for 6 months after service line replacement.
- Follow the manufacturer's instructions included with your filter packaging to know when and how to change the filter cartridge.



LCA will test your tap water for free in 3 to 6 months after replacement. Please watch for information in the mail post-replacement and read carefully.

